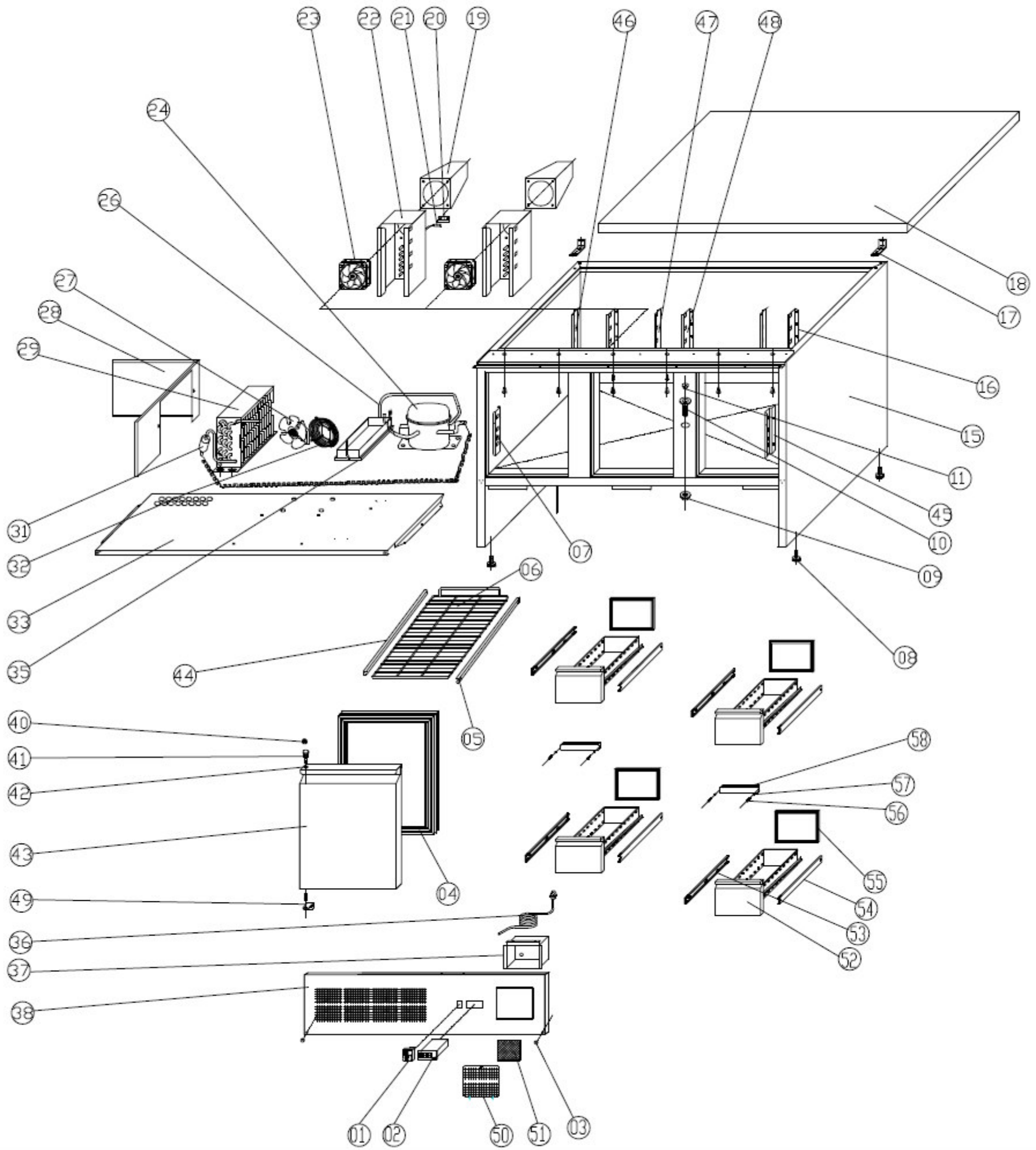


Explosionszeichnung

**Kühltisch
KTM 304**



KBS Gastrotechnik GmbH - Johannes-Kepler-Str. 14 - 55129 Mainz



SPARE PARTS LIST

| N0. | CODE | NAME | MODEL | QUY. |
|-----|--------------|-----------------------|-------------------------------|-------|
| 1 | S900.01 | MAIN SWITCH | DRH-2415-3 | 1PC |
| 2 | S900.02 | THERMOSTAT | XR02CX | 1PC |
| 3 | S900.03 | PLASTIC CAP | Φ13 | 6PCS |
| 4 | S900.08 | GASKET | | 1PC |
| 5 | GN2100TN.31R | GUIDE RIGHT | | 1PC |
| 6 | GN2100TN.32 | SHELF | GN1/1 | 1PC |
| 7 | S901.06L | SIDE SUPPORT LEFT | | 3PCS |
| 8 | S900.13 | FEET | | 4PCS |
| 9 | S900.14 | DRAIN PIPE NUT | | 1PC |
| 10 | S900.15 | DRAIN PIPE | | 1PC |
| 11 | S900.16 | DRAIN PIPE COVER | | 1PC |
| 15 | S903.01 | BODY | | 1PC |
| 16 | S901.05R | BACK SUPPORT RIGHT | | 1PC |
| 17 | S901.01 | TOP HINGE | | 1PAIR |
| 18 | S903TOP.01 | TOP | | 1PC |
| 19 | S900.30A | AIRFLOW DUCT | | 2PCS |
| 20 | S900.31 | SENSOR FIXED CLIP | | 1PC |
| 21 | S900.32 | SENSOR | | 1PC |
| 22 | S901.04 | CIRCLE FAN SUPPORT | | 2PCS |
| 23 | GN2100TN.23E | CIRCLE FAN | SA9225A2 | 2PCS |
| 24 | G-S903.01 | COMPRESSOR | HPKD190A | 1PC |
| 26 | S903.02 | DISCHARGE TUBE | Φ6 | 1PC |
| 27 | GN650TN.34 | CONDENSER FAN | CA01-01/Φ200 | 1PC |
| 28 | S903.06 | CONDENSER COVER BOARD | | 1PC |
| 29 | GN650TN.38 | CONDENSER | | 1PC |
| 31 | GN1410TN.14 | FILTER DRIER | 25g | 1PC |
| 32 | GN650TN.46 | BASKET GUARD GRILLS | | 1PC |
| 33 | S903.09 | UNIT BOARD | | 1PC |
| 35 | S900.40 | WATER PAN | | 1PC |
| 36 | S900.47 | PLUG | T312/1.5MM ² ×3GLT | 1PC |
| 37 | S900.48 | JUNCTION BOX | | 1PC |
| 38 | S903.11J9 | FRONT PANEL | 控制面板 (J9)控制 面板 (J0) | 1PC |
| 40 | GN2100TN.85 | NUT | M8 | 3PCS |
| 41 | GN2100TN.84 | DOOR HINGE AXIS | Φ6 | 3PCS |

| | | | | |
|----|------------------|---------------------------|------------------------|------|
| 42 | GN2100TN.83 | DOOR BUSHING | Φ6 | 3PCS |
| 43 | S900.07L | DOOR LEFT | | 1PC |
| 44 | GN2100TN.31L | GUIDE LEFT | | 3PCS |
| 45 | S901.06R | SIDE SUPPORT RIGHT | | 3PCS |
| 46 | S901.05L | BACK SUPPORT LEFT | | 1PC |
| 47 | S901.18L | BACK MIDDLE SUPPORT LEFT | | 2PCS |
| 48 | S901.18R | BACK MIDDLE SUPPORT RIGHT | | 2PCS |
| 49 | S900.05L | DOWN HINGE LEFT | | 1PC |
| 50 | S903.12 | SCREEN FILTER SUPPORT | | 1PC |
| 51 | U-GN2100TN(HT11) | FILTER | | 1PC |
| 52 | SET2D.02S | DRAWER | GN1/1x6 " GN1/1x6 " | 4PCS |
| 53 | SET3D.08 | GUID E(LEFT) | L=550 | 4PCS |
| 54 | SET3D.07 | GUIDE(RIGHT) | L=550 | 4PCS |
| 55 | SET2D.01 | GASKET | SET 2 DRAWER | 4PCS |
| 56 | SET3D.03 | SCREW | M4 | 4PCS |
| 57 | SET3D.04 | WASHER | | 4PCS |
| 58 | SET3D.02 | BRIDGE | | 2PCS |